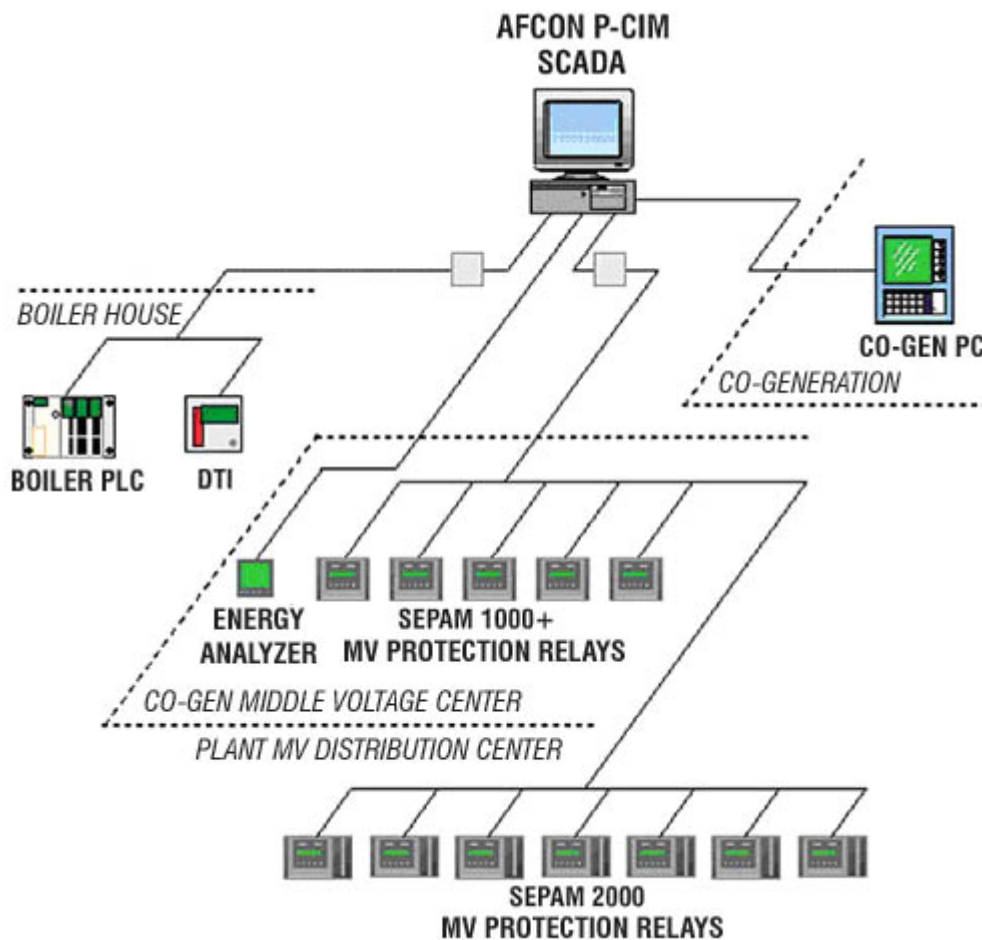


Kombassan Muratlı Cardboard Factory Co-generation SCADA System



Client

Schneider Electric

Project Scope

Energy production and distribution centers are monitored by SCADA in one control center. Also, boiler house automation system is installed and integrated with SCADA.

Start-up

2004

Our Projects

Plant

Kombassan Muratlı Cardboard Factory is one of the most important cardboard factories in Turkey. The plant has a high technology production line which provides high ranks in the market. Glossy Cardboard which is one of the prevalent items is produced in 225 gr/m2 to 450 gr/m2 ranges and shipped to local markets in forms of rolls and certain dimensions. Produced material is also exported to other countries.



Project

Process variables of the 5 MVA gas turbine and boiler are collected from the turbine computer via OPC Server connection.

12 SEPAM MV protection relays in two different MV distribution centers in a distance of 400 meters are connected to the SCADA. Circuit breaker positions and network parameters such as currents, voltages, powers, energies, power factors and frequencies are monitored.

Also a boiler house automation system is installed. Modicon TSX Micro PLC is used for automation and SCADA integration.

Analog variables with historical trend options are available. Also alarms are being detected and reported. Graphical reports, production and consumption reports are generated. System has an open architecture for future expands and integration with other systems.

